



Canby Comprehensive Plan & Transportation Systems Plan

**Technical Advisory Committee Meeting #4
June 13th, 2024. 1:00pm – 2:00pm (TSP),
2:00pm – 3:00pm (Comp Plan)**



Agenda



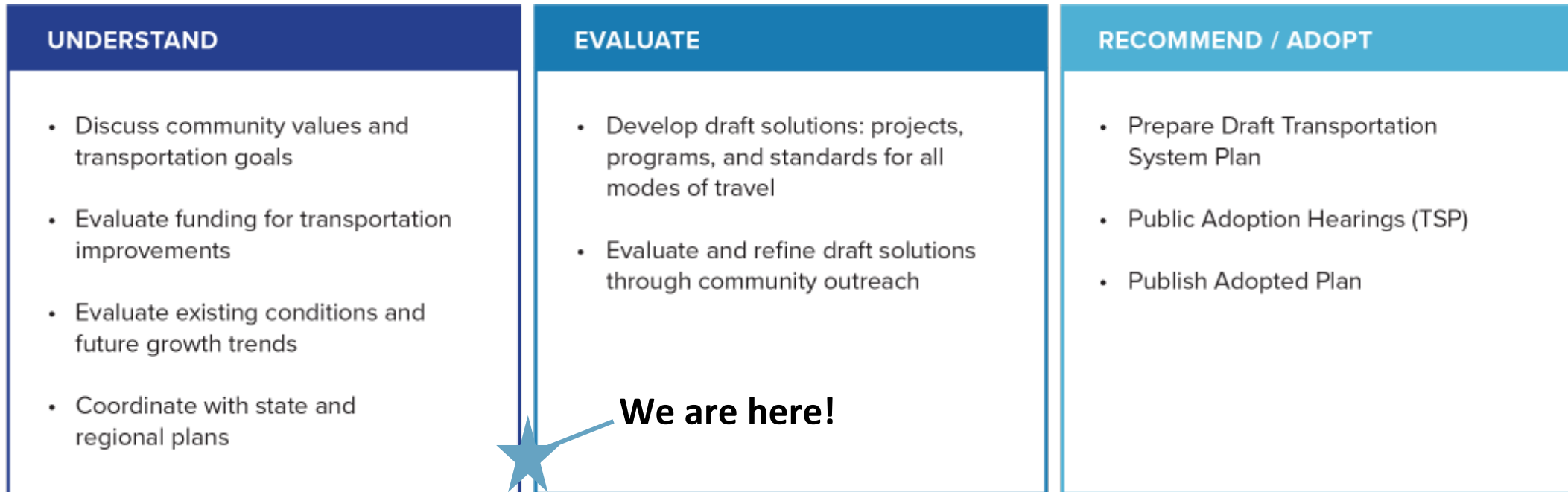
Future Multimodal Conditions and Needs: Twenty Year Look at Canby

- 1) Process to date and moving forward
- 2) Review of initial technical findings, how the City system works today and how it may change by 2043
- 3) Discussion / feedback - identification of key issues and opportunities



Process to date and moving forward

TSP Technical Development



TSP Deliverables (completed):

- *Policy and Plan Investigation*
- *Performance Measures and Prioritization Framework*
- *Existing Multimodal Conditions*
- **Future Traffic Forecasting**
- **Future Multimodal Needs**

TSP Deliverables (next steps):

- **Transportation Funding**
- **Transportation Facility Design and Performance Standards**
- **Transportation Projects and Programs**
- **Transportation Project Prioritization**

TSP Deliverables (compiled from earlier deliverables):

- **Draft TSP**
- **Adoption Draft TSP**



Twenty Year Look at Canby

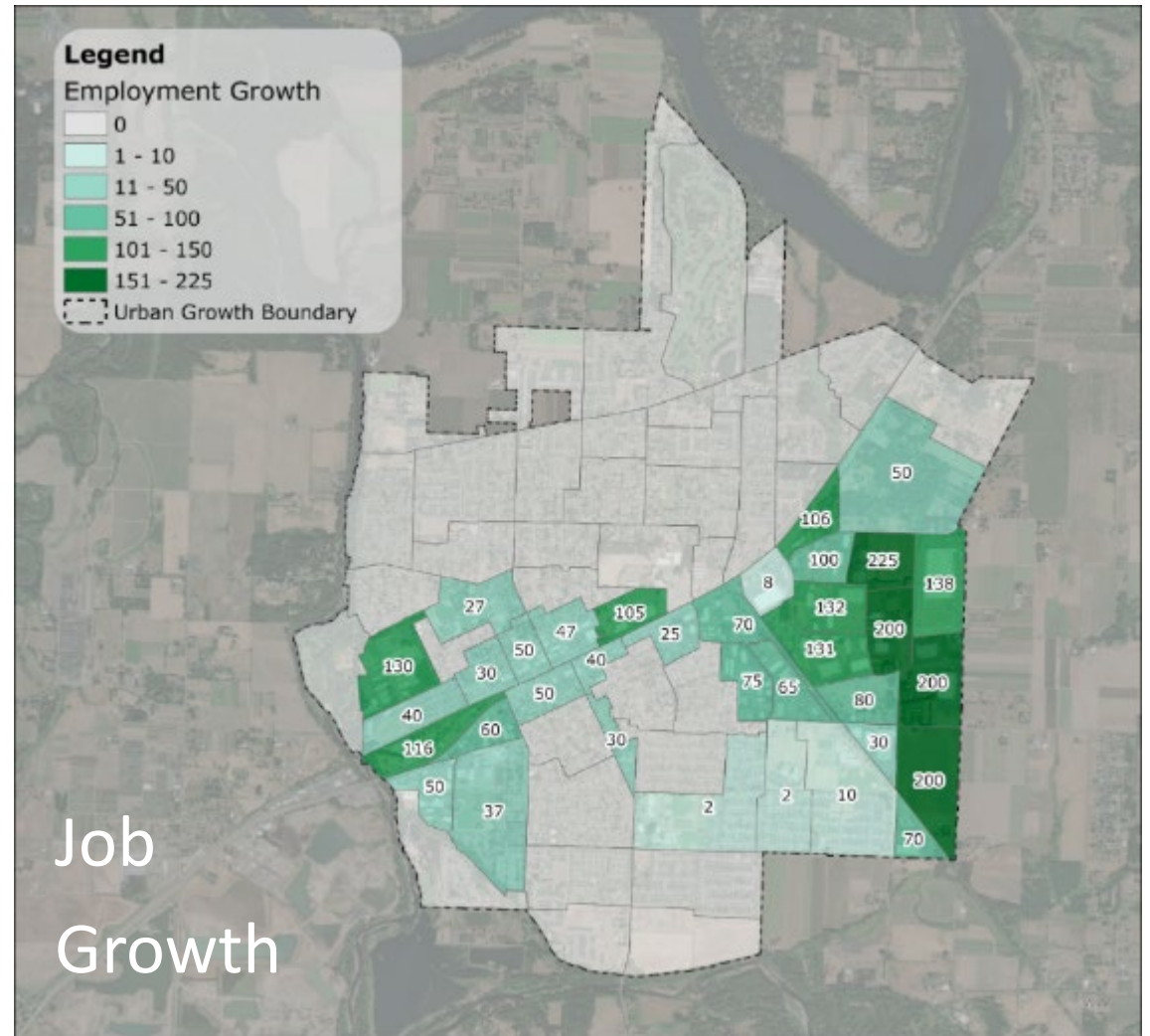
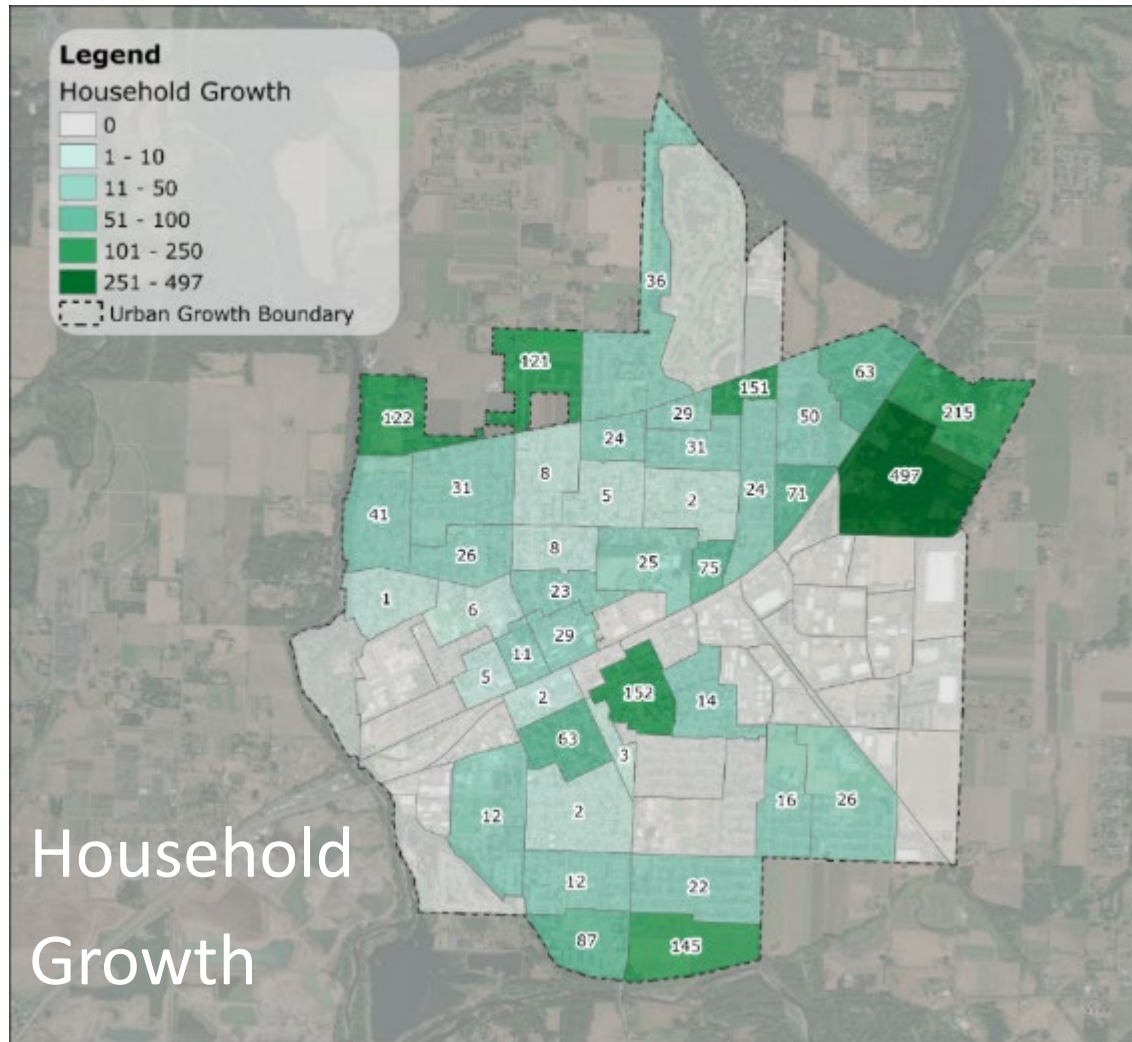
Forecasted Population and Employment Growth (2023 to 2043)

Canby UGB Land Use Summary			
Canby Area	2023	2043	% Increase
Total Households	7,189	9,475	32%
Total Employment	7,666	10,397	36%

- +5,931 residents
- +2,286 households
- +2,731 jobs

Note: Forecasts based on 2023 City of Canby Housing Needs Analysis and 2023 City of Canby Economic Opportunities Analysis

Where is the growth expected?



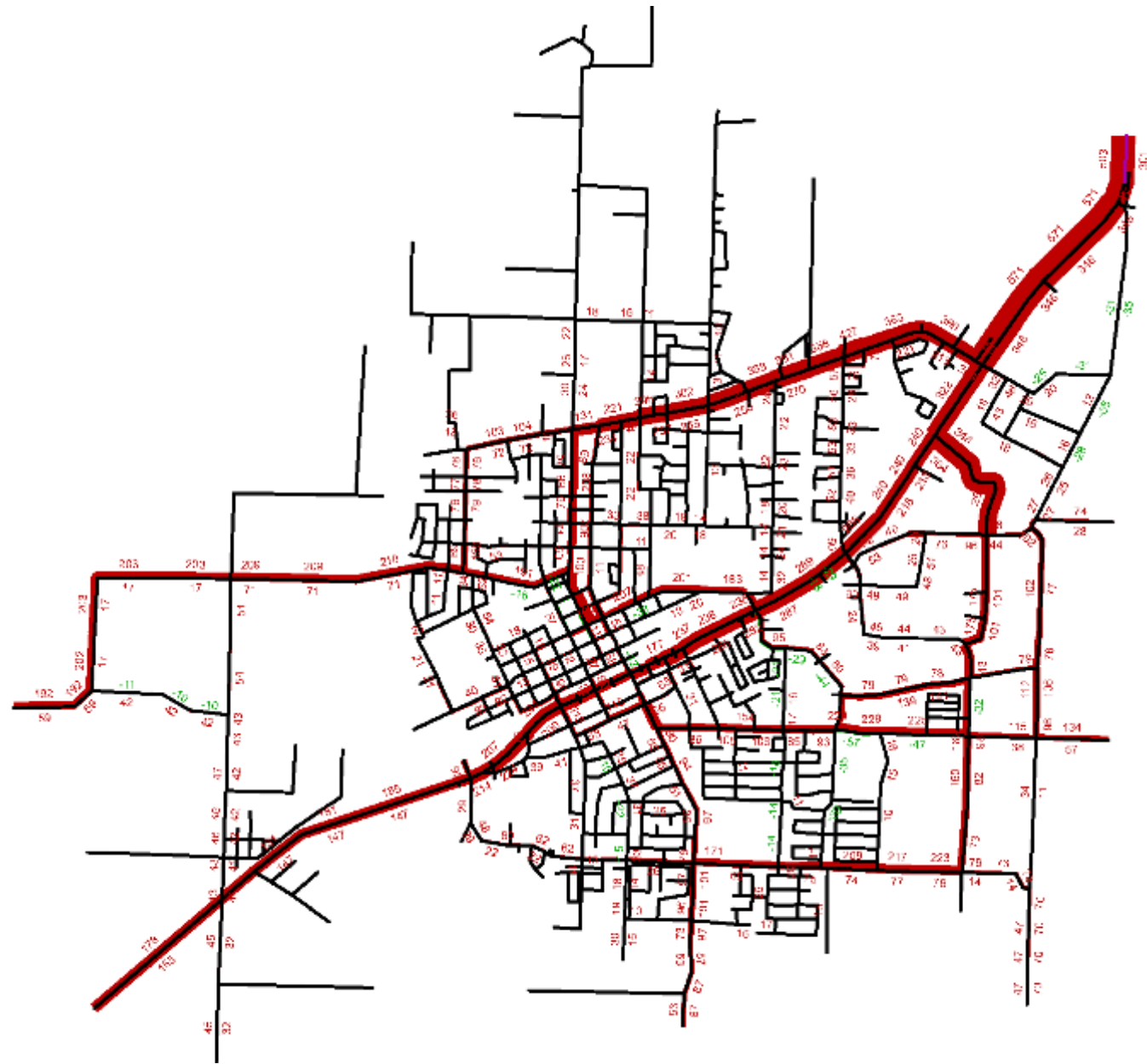
Average Weekday Trips by Mode (PM Peak)

Mode	2023 Trips	2043 Trips	Growth
Vehicle Trips	10,324	13,432	+3,108
<i>Drive Alone Trips (SOV)</i>	<i>9,349</i>	<i>12,164</i>	<i>+2,814</i>
<i>Shared Ride Trips</i>	<i>975</i>	<i>1,268</i>	<i>+294</i>
Transit Trips	378	491	+114
Walk Trips	1,259	1,638	+379
Bike Trips	252	328	+76
Total	12,213	15,889	+3,677

- Vehicle trip ends +30%

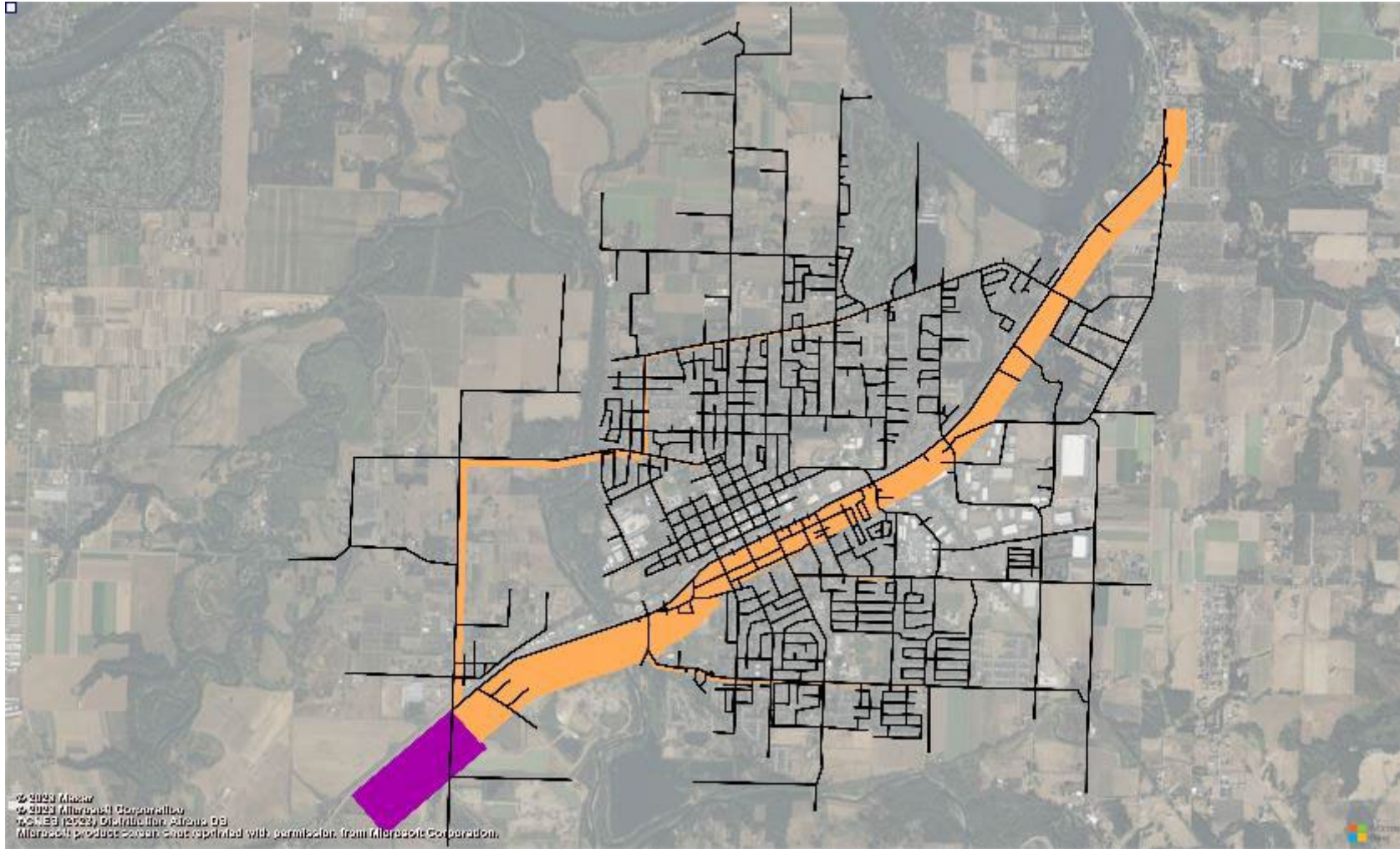
Vehicle Trip Growth

- Highest increases in traffic volumes through 2043:
 - OR 99E
 - N Territorial Road
 - the new Walnut Street Extension
 - S 13th Avenue

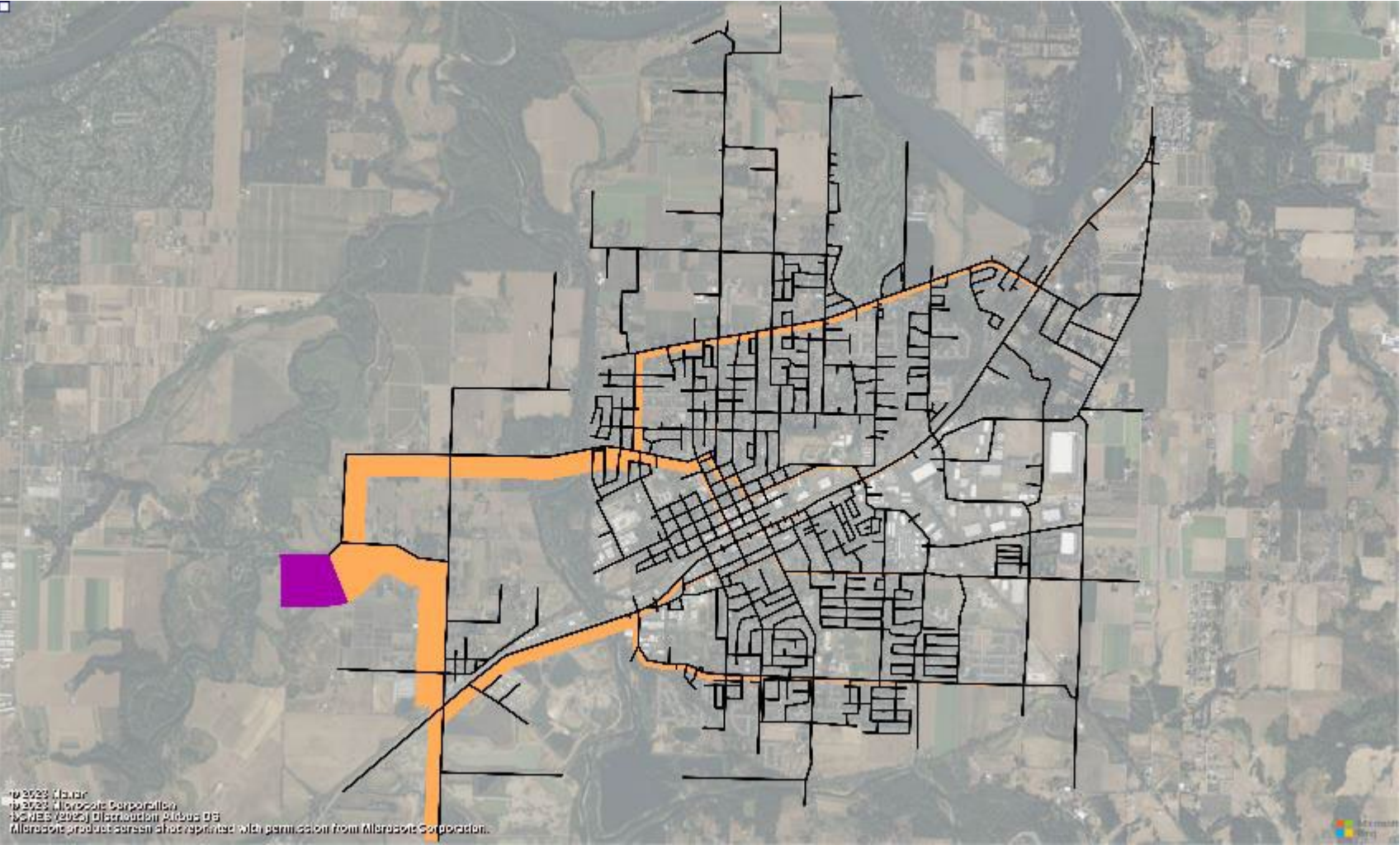


Note: Raw model traffic growth in the p.m. peak hour (2023-2043)

Eastbound OR 99E 2043 Volume Distribution



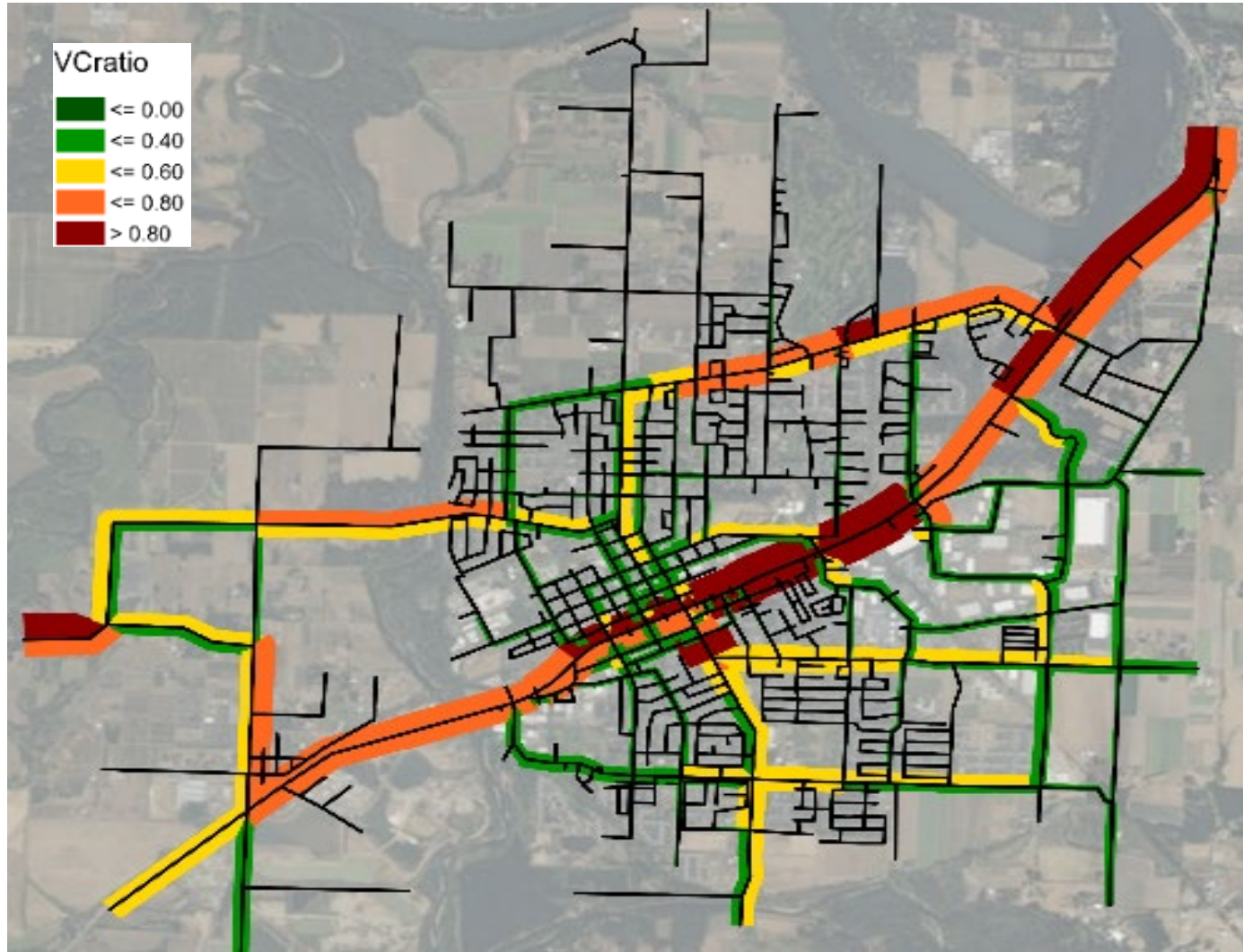
Eastbound Knights Bridge Road 2043 Volume Distribution



© 2023 Microsoft
© 2023 Microsoft Corporation
© 2023 Microsoft Corporation
Microsoft product screen shot reprinted with permission from Microsoft Corporation.

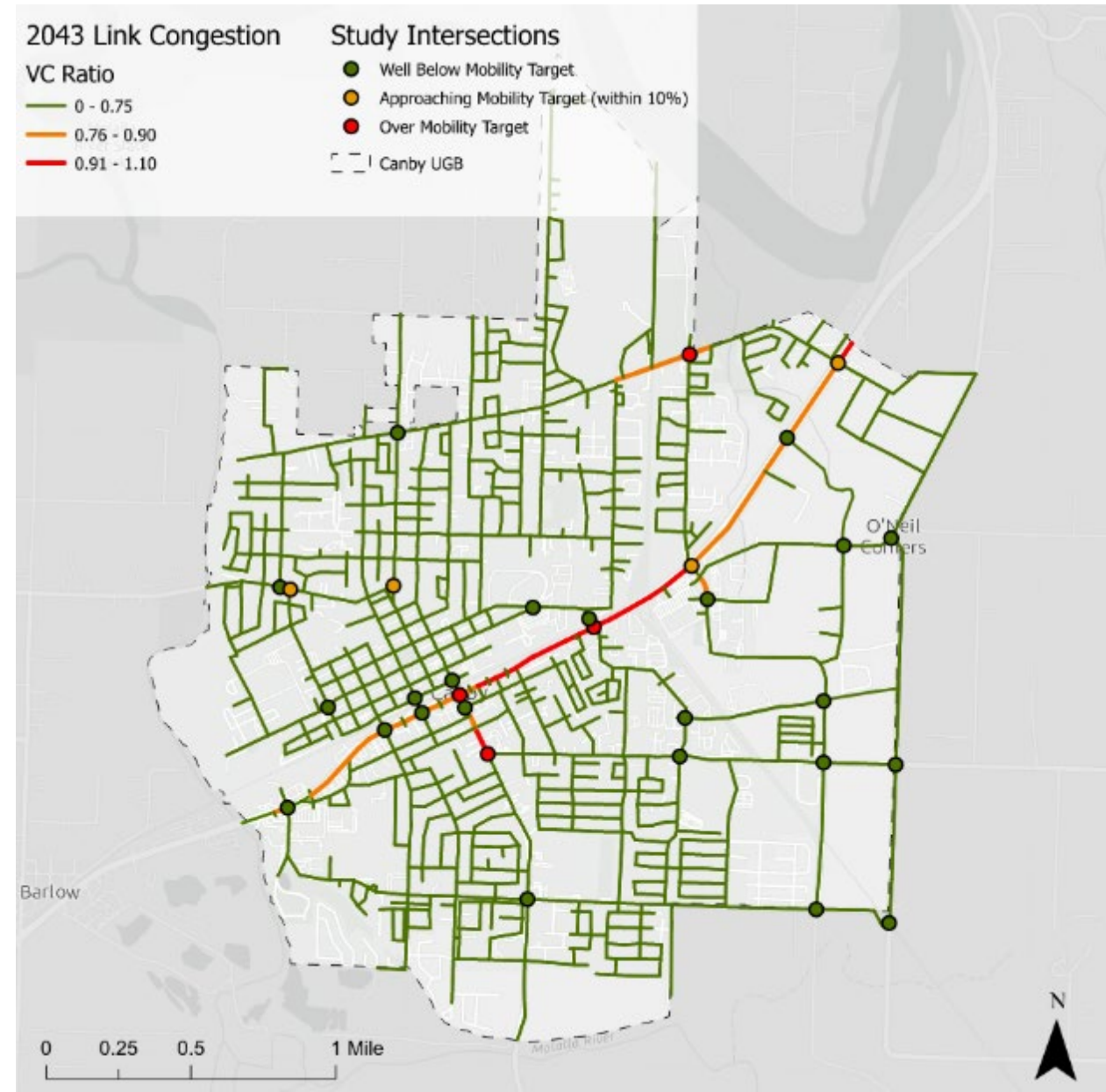


2043 Demand to Capacity Ratios on Model Links



Future Conditions: 2043 PM Peak Hour

- **Intersections expected to exceed their mobility target:**
 - OR 99E/Ivy Street (v/c: 1.13)
 - OR 99E/Pine Street (v/c: 1.21)
 - NE Territorial Road/N Redwood Street (LOS E)
 - S Township Road/Ivy Street (LOS E)
- **Segment Congestion:**
 - OR 99E – through downtown Canby
 - Side street approaches to OR 99E



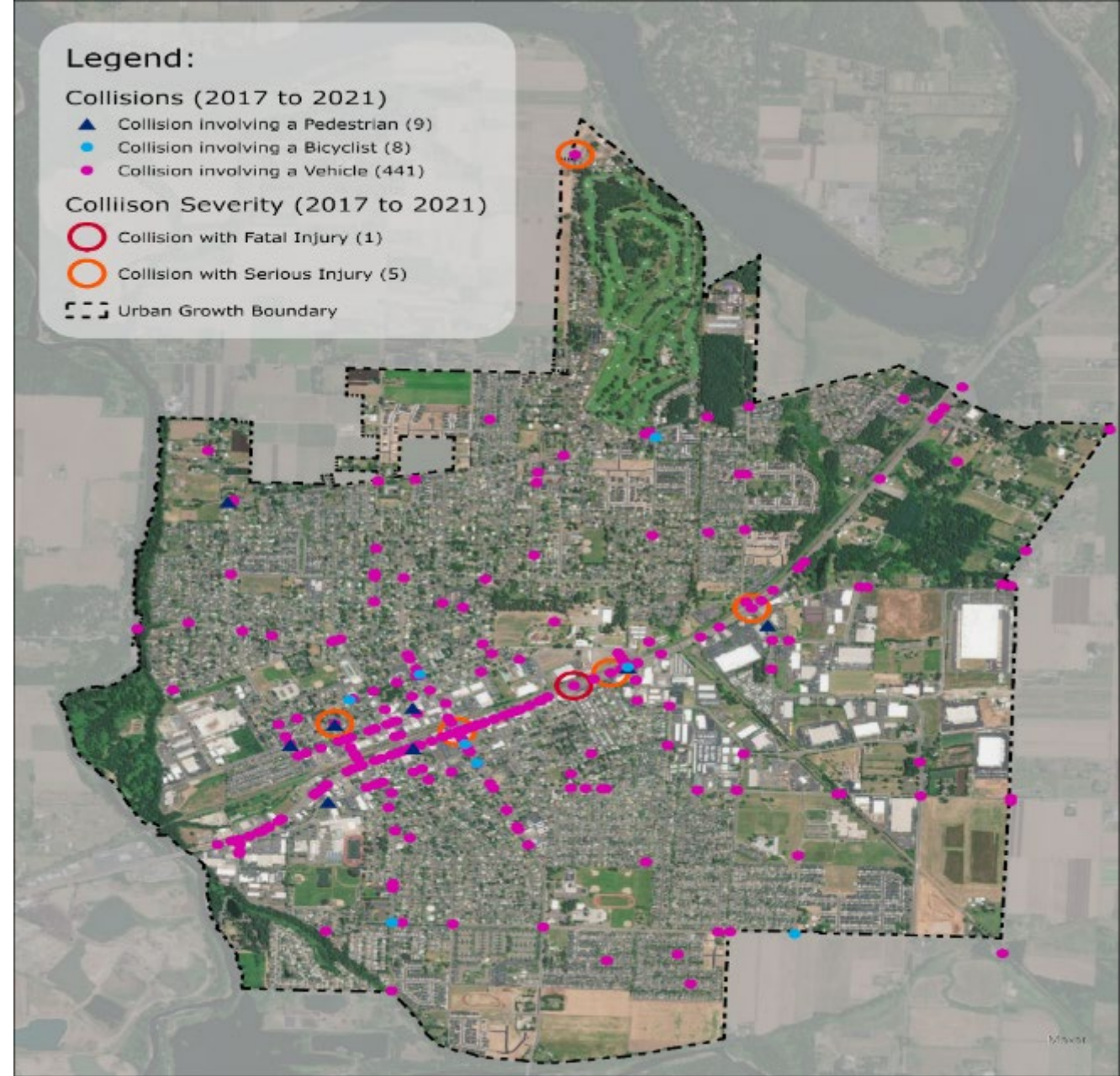
Transportation Safety

Collisions

- Involving a Pedestrian: 9
- Involving a Bicyclist: 8
- Involving a Vehicle(s): 441

Crash Hotspots:

- OR 99E between Elm Street and Pine Street
- OR 99E/Ivy Street intersection



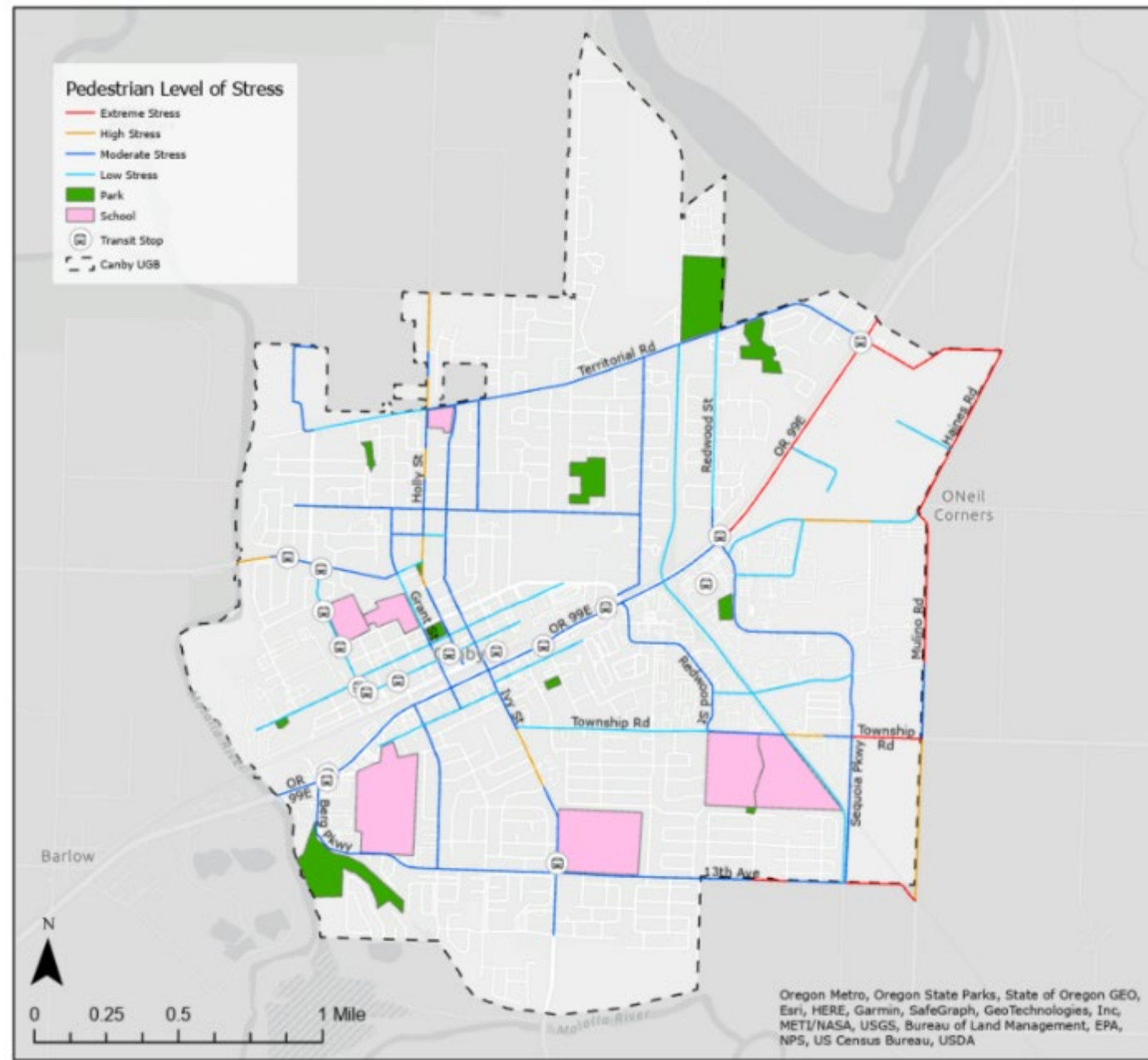
Pedestrian Traffic Stress

Extreme or High Stress Miles:

- 17% of all facility miles analyzed in Canby
 - OR 99E
 - Mulino Road
 - Township Road

Needs and Deficiencies

- Fill gaps in sidewalk network, especially near schools
- Provide safe crossings, especially on OR 99E, UPRR and collectors



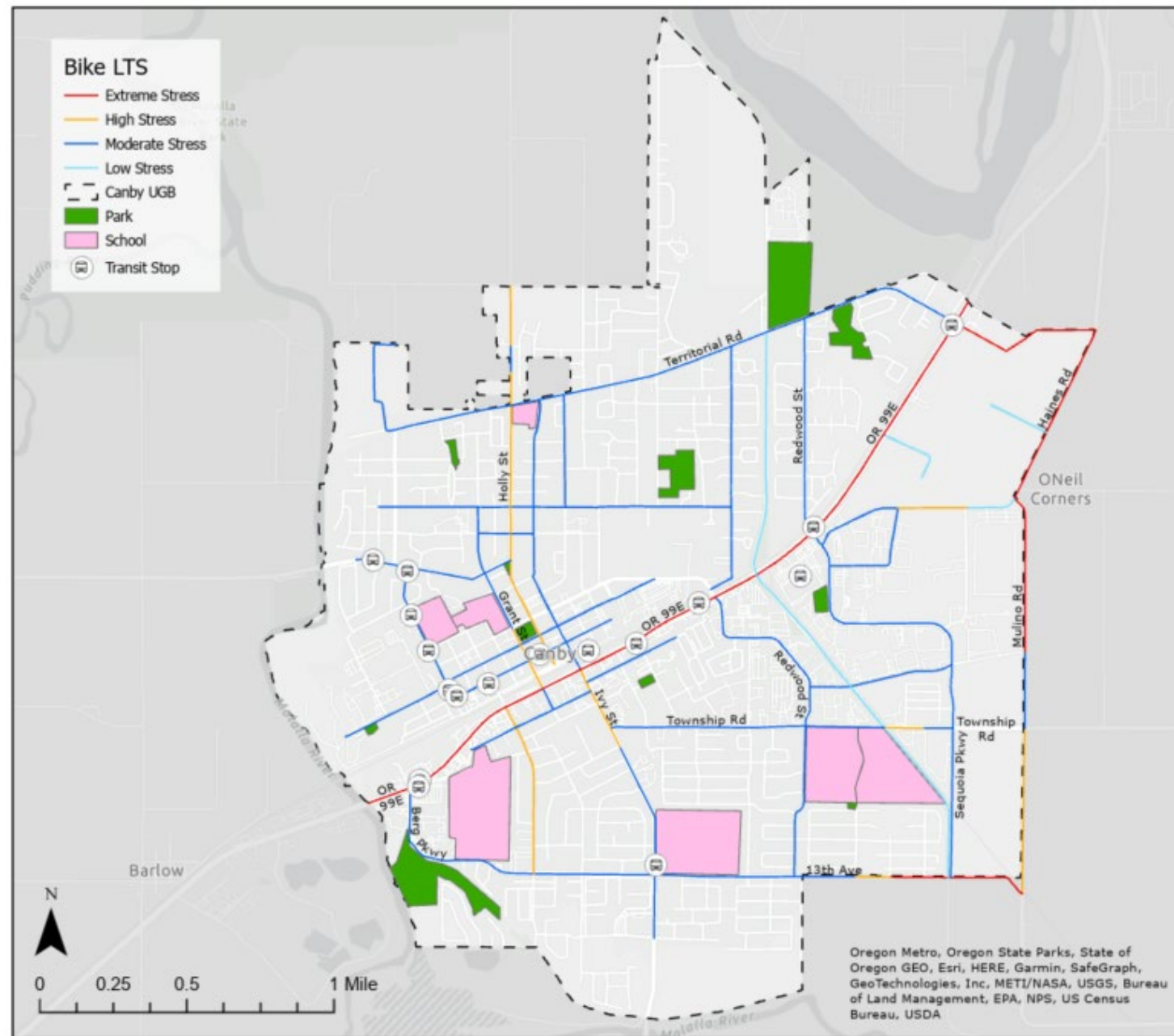
Bicycle Traffic Stress

Extreme or High Stress Miles:

- 28% of all facility miles analyzed in Canby
 - OR 99E
 - Haines Road
 - Mulino Road
 - Holly Street
 - 13th Avenue

Needs and Deficiencies

- Fill gaps in bike lane network
- Add buffers and/or physical barriers to enhance safety on bike lanes





Discussion / feedback Identification of key issues and Opportunities

Develop working list of critical issues and opportunities with the transportation system in Canby

1. Questions or comments on TM #8 or TM #9?
2. What are the most critical issues and/or biggest opportunities with the transportation system in Canby?

What we heard:

County:

1. Policy around County road jurisdiction and transfers to City as new development occurs.
2. Incorporate projects from the County's Active Transportation Plan.

PAC:

1. Complete missing sidewalk links and improve crossings along key streets, such as Territorial.
2. Lessen impact of rail crossings/switching and extended gate down times.
3. Improve connections to/from I-5 and Oregon City, including fixing issues at congested intersections.
4. Need for additional east-west arterial/collector level roadways.
5. Need for new connections to OR 99E and overpass. Desire to keep Berg Parkway overcrossing project in the TSP.
6. Incorporate parks plan and multiuse paths, including the Emerald necklace.
7. New projects should be a balance of quality of life and accommodating news trips.

Next Steps

TSP Next Steps

- Analysis of funding available for Transportation Improvements
- Development of Transportation Facility Design and Performance Standards
- Development of Preliminary Transportation Projects and Programs

Upcoming TAC Meetings

TAC meetings

- ~~#1 (Feb 2024): Discuss Existing Multimodal Conditions and Needs~~
- #2 (June 13, 2024): Discuss Future Traffic Forecasting and Future Multimodal Conditions and Needs
- #3 (Fall 2024): Discuss Transportation Funding and Transportation Projects and Programs
- #4 (Winter 2024/2025): Review the Draft TSP

Thank you!

