

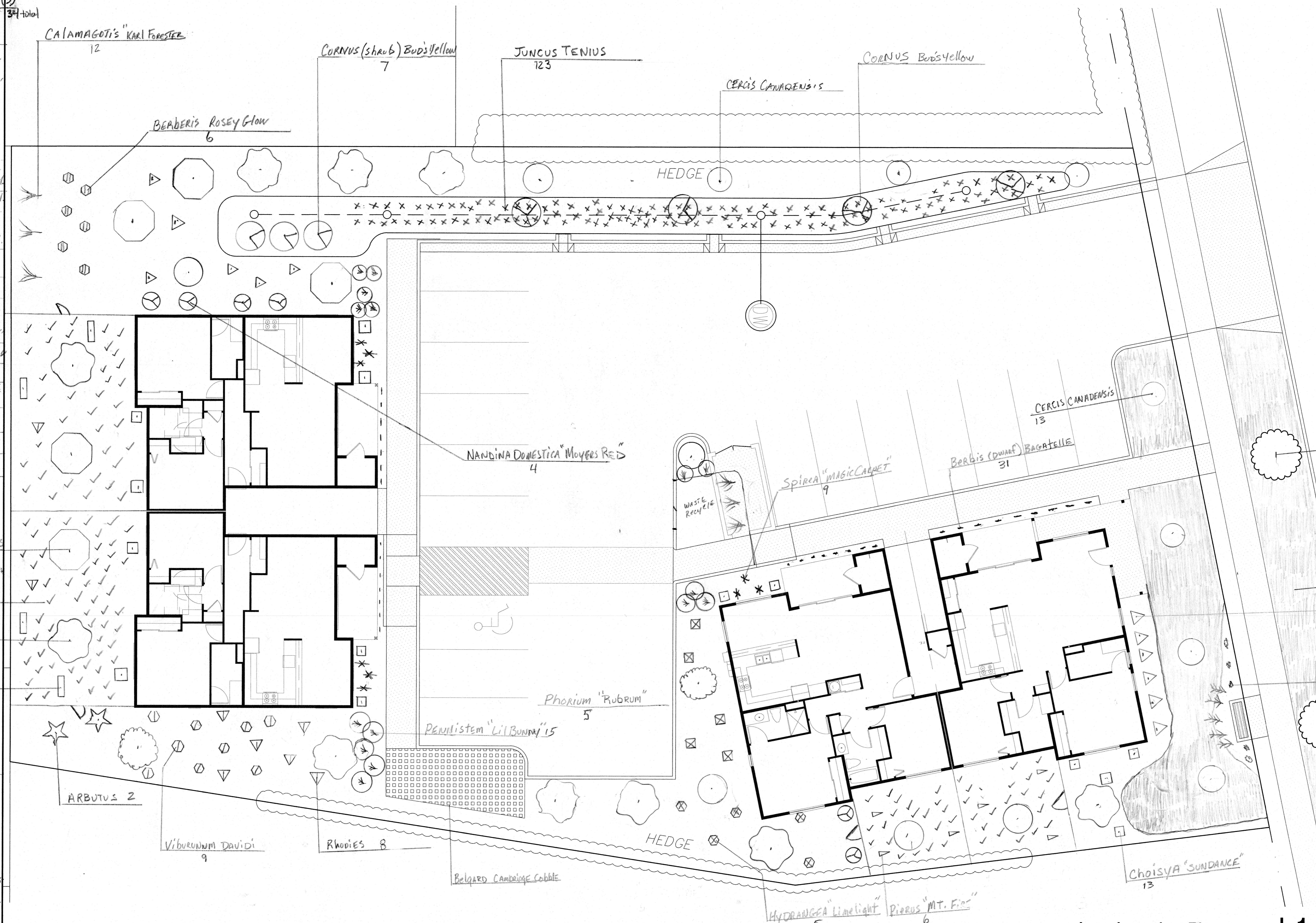
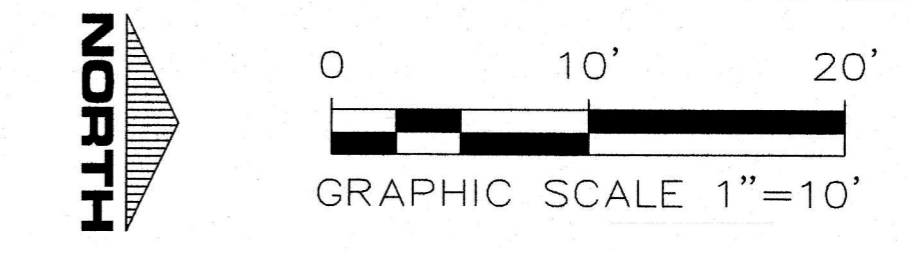
- TREES**
- WESTERN RED CEDAR 67 (10)
 - ARBUTUS COMPACTA 10 GAL. (2)
 - ACER GRISEUM 2" CAL. (4)
 - CERCIS CANADENSIS 2" CAL. (13)
 - CUPRESSUS NOOTKATENSIS (5)

- GRASSES**
- CALAMAGROTIS 1 GAL.
 - PENNISETUM "Lil BUNNY" 1 GAL.
 - HAKONECHLOA "All GOLD" 1 GAL.
 - X JUNCUS TENUIS 1 GAL.

- Shrubs**
- ABELIA "KALEIDOSCOPE" 5 GAL.
 - CHOISYA "SUNDANCE" 5 GAL.
 - VIBURNUM DAVIDI 3 GAL.
 - RHODIE "JEAN MARIE" 5 GAL.
 - BERBERIS "ROSEY GLOW" 5 GAL.
 - BERBERIS "BAGATTE" 2 GAL.
 - NANDINA DOMESTICA 5 GAL.
 - SPirea "MAGIC CARPET" 5 GAL.
 - PIERUS "FOREST FLAME" 5 GAL.
 - PIERUS "MT. FIDO" 5 GAL.
 - CORNUS "BOO'S YELLOW" 5 GAL.
 - PHORUM "RUBRUM" 5 GAL.
 - HYDRANGEA "LIMELIGHT" 5 GAL.
 - VINCA MINOR 1 GAL.

- CUPRESSUS NOOTKATENSIS 5
- VINCA MINOR 152
- WESTERN RED CEDAR 10
- PIERUS "FOREST FLAME" 4

- NOTES:**
- * ALL TREES TO BE STAKED AND TIED:
 - * AS BUILT IRRIGATION DESIGN:
 - * 3WAY BLENDERSOIL TO AMEND AND BUILD
 - GRADE ALL LANDSCAPE AREAS
 - * ALL BEDS TO COVERED WITH MIN. 2" MEDIUM DARK FIR BARK MULCH



DAVID GROVER
GROVERS LANDSCAPE INC.
503-936-8910
10/22/2021