



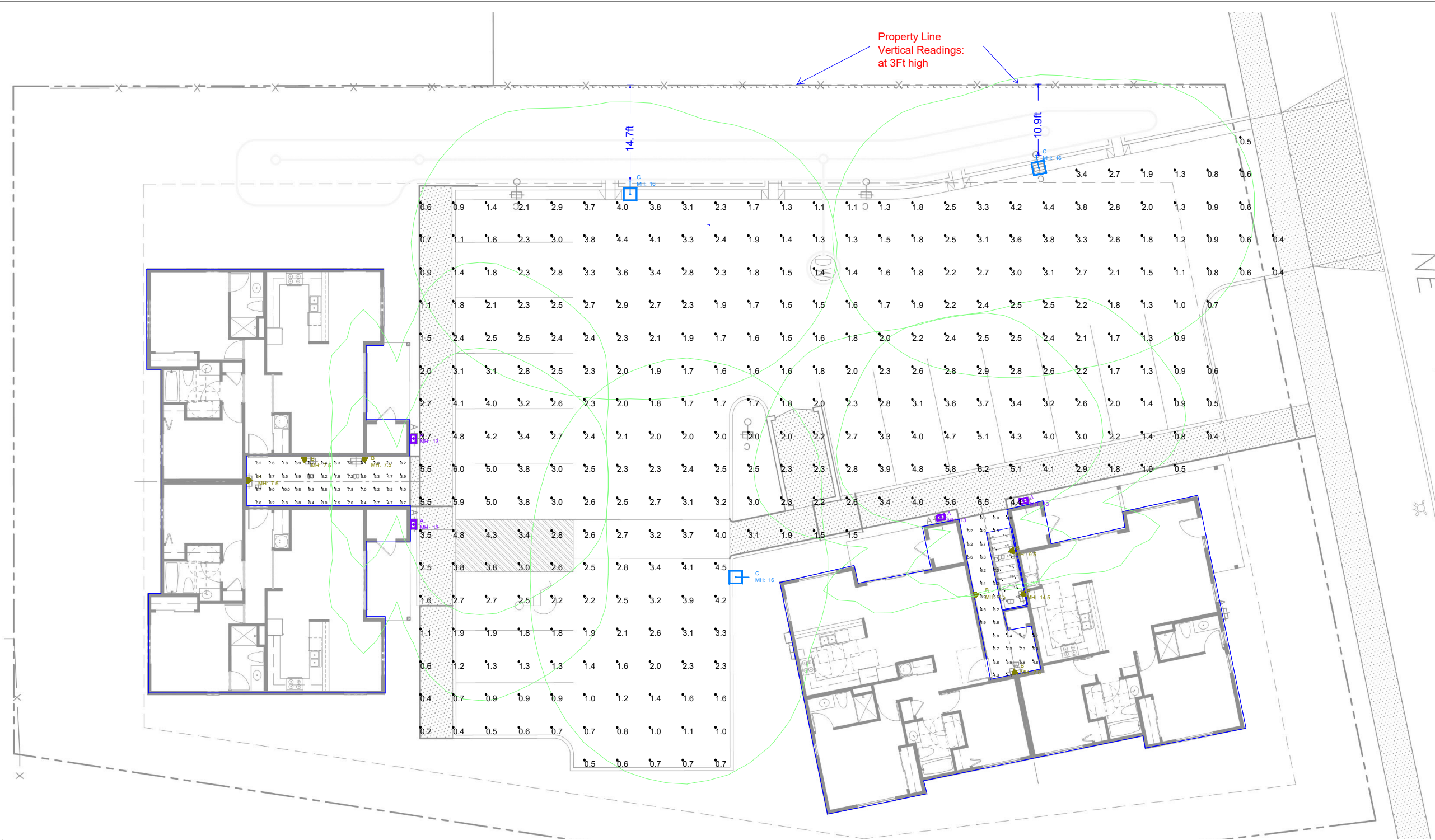
COLUMBIA PACIFIC SALES
LIGHTING REPRESENTATIVES

Columbia Pacific Sales
Cell: 503-867-0736

Date: 10/21/2021

Wild Hare

Exterior Lighting



Not to Scale

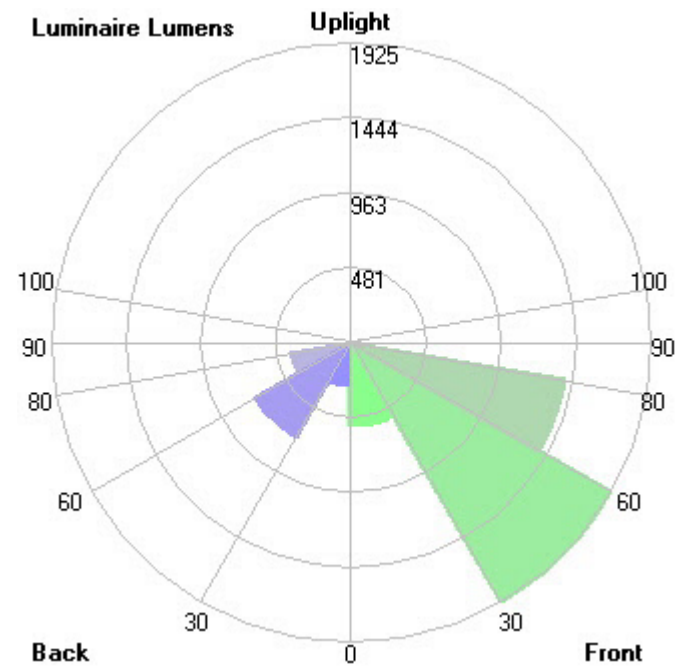
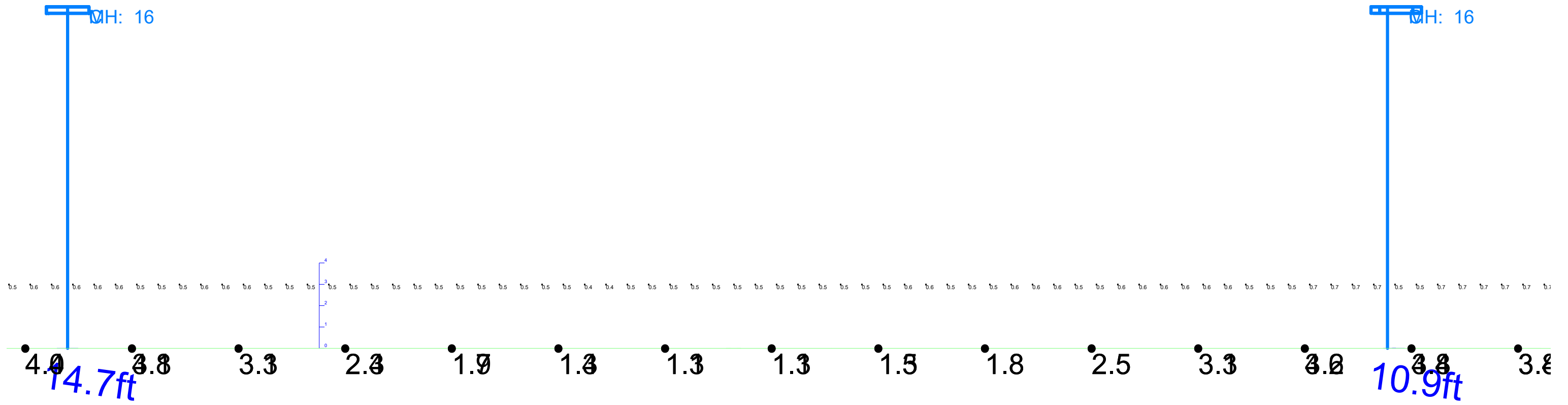
| Luminaire Schedule | | | | | | | |
|--------------------|-----|-------|-------|-------------|------------|--------------------------|-------------------------|
| Symbol | Qty | Label | LLF | Lum. Lumens | Lum. Watts | Description | [MANUFAC] |
| ☐ | 4 | A | 0.800 | 3521 | 27.8 | VNTW-3500L-30K-DIM-4S-BZ | XtraLight Manufacturing |
| ☐ | 7 | B | 0.900 | 2380 | 27.4701 | ODW-25LED-3000K | UTOPIA LIGHTING |
| ☐ | 3 | C | 0.900 | 5311 | 40 | LSL-3G-40LED-30K-T4-UNV | UTOPIA LIGHTING |

| Calculation Summary - Illuminance (Fc) | | | | | | | |
|--|------|------|-----|---------|---------|------------|--|
| Label | Avg | Max | Min | Avg/Min | Max/Min | Grid Z | |
| At property line - 3Ft Vertical | 0.51 | 0.7 | 0.2 | 2.55 | 3.50 | 2.5 to 3.5 | |
| Parking | 2.34 | 6.5 | 0.2 | 11.70 | 32.50 | 0 | |
| stairs_Side_3 | 7.39 | 12.6 | 2.4 | 3.08 | 5.25 | 0 to 9 | |
| Stairwell A | 6.84 | 10.0 | 3.2 | 2.14 | 3.13 | 0 | |
| Stairwell B | 5.39 | 7.4 | 0.0 | N.A. | N.A. | 0 | |

Readings taken at grade

SL1

062-05



Luminaire Classification System (LCS) : type C

VI. Site Lighting Cut Sheets

| | |
|--------------|------|
| Project Name | Type |
| Catalog # | Date |

VIENTO LED WALL PACK

VNTW LED

Viento
WALL PACK



APPLICATIONS

- Building Facades
- Entry Ways
- Sidewalks
- Security Lighting
- Accent Lighting
- General Exterior Lighting

APPROVALS

- ETL listed. Complies with UL1598 and CSA C22.2#250.0.0:2008
- Suitable for Wet Locations.
- IP66 rated
- BAA Compliant
- RoHS Compliant
- Select models DLC Qualified. For a complete list of DLC Qualified products, please visit: <http://www.xtralight.com/dlc> or www.designlights.org/qpl
- Appropriate parts/test guidelines were performed by ATAL www.atal-labs.com

FEATURES

- Uniform light distribution, ideal for building facades, entry ways, sidewalks and general security or accent lighting.
- LED provides a significant energy savings over HID.
- Custom colors are available (consult factory).
- Designed for ease of installation.
- Operating temperature: -40°C to +50°C (-40°F to +122°F)

OPTICS

- Optical grade polymer is UV stabilized and impact resistant.
- IP66 rated LED light engines prevent dust and moisture from degrading performance.
- Distributions: Type II Short, Type II Medium, Type III Medium and Type IV Short.
- Best in class LEDs with 3000K (min 80 CRI), 4000K, and 5000K CCT (min 70 CRI).
- Lumen Maintenance: >100,000hrs L70 @ 25°C.
- Precision molded optics for superior uniformity, minimal light trespass and maximum spacing.
- Zero uplight (UO) is night sky friendly, reduces wasted light.

WARRANTY

- Backed by XtraLight's industry leading 10-year warranty.

CONSTRUCTION

- Housing: Two-piece die-cast aluminum has integral heat sink fins to optimize thermal management through conductive and convective cooling.
- Housing and back box are protected with a thermoset TGIC-polyester powder coat finish.
- The LED driver is mounted in direct contact with the casting to promote low operating temperature and long life.
- Silicone gasket is included to prevent leakage and provide weather-tight protection.
- All fasteners are stainless steel.

ELECTRICAL

- Voltage: 120-277V 50/60Hz driver (standard);
- 48D: 347-480V 50/60Hz driver with (optional).
- Class 2 electronic drivers are designed to have a power factor >90%, THD <20%, and an expected life of 100,000 hours with <1% failure rate.
- Dimming: 0-10v dimmable driver standard.
- Passive Infrared (PIR) Photo/Motion Sensor optional.
- Emergency battery backup option (EM) is available for some models; CEM suited for cold weather, has external test button and LED indicator light to notify when the heater is on.

ORDER LOGIC

SAMPLE CATALOG NUMBER: VNTW-8000L-40K-DIM-2M-BZ

| VNTW | - | - | - | - | - | - | - |
|--------|-----------|--------------|--------------------|-----------|--------------------|--|---|
| MODEL | CCT | DRIVER | OPTICS | FINISH | CONTROLS & OPTIONS | | |
| 3500L | 30K 3000K | DIM Dimmable | 2S Type II Short | WH White | EM ¹² | Emergency Battery Back-Up | |
| 5500L | 40K 4000K | 120-277V | 2M Type II Medium | BZ Bronze | CEM ² | Cold Weather Emergency Battery Back-Up | |
| 8000L | 50K 5000K | 48D Dimmable | 3M Type III Medium | | FSP2 | Programmable Occupancy Sensor, 8'H/40'D | |
| 11000L | | 347-480V | 4S Type IV Short | | FSP3 | Programmable Occupancy Sensor, 20'H/40'D | |
| | | | | | PC | Photocell, Button, 120-277V | |
| | | | | | GTD | Generator Transfer Device | |

1. EM not available with 11000L. Maximum operating temperature with EM for 3500L (40°C/104°F), 5500L (35°C/95°F), 8000L (30°C/86°F).
 2. Minimum temperature for EM (0°C/32°F).
 3. Minimum temperature for CEM (-20°C/-4°F).



VIENTO LED WALL PACK

VNTW LED

DIMENSIONAL DATA

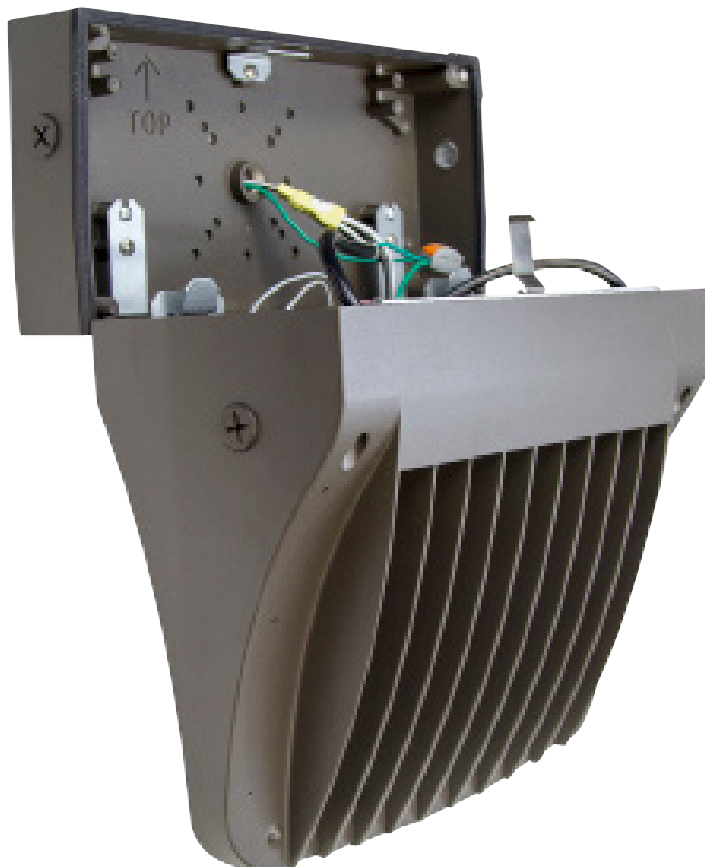
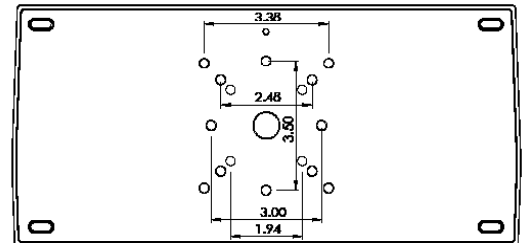
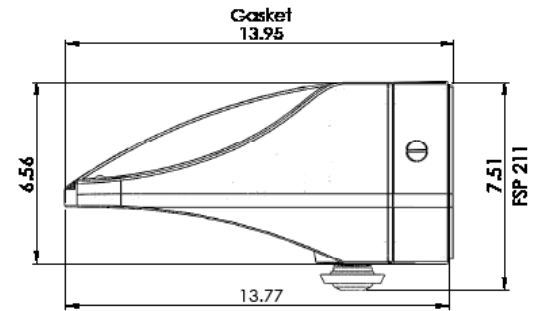
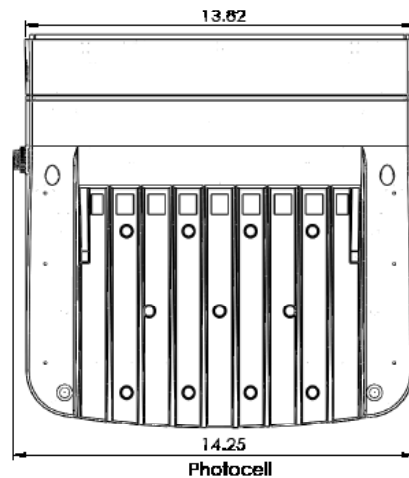
Weights By Model

3500L - 17.3 lbs. (20.1 lbs. with EM)

5500L - 17.3 lbs.

8000L - 18.0 lbs.

11000L - 18.0 lbs.



SMART ENGINEERING DESIGN EASY TO INSTALL CONTEMPORARY APPEARANCE

- Make necessary holes in Back Plate gasket included with the luminaire.
- Peel adhesive and adhere gasket to back of Back Plate.
- Mount luminaire Back Plate to wall as needed using surface mounted conduit or existing junction box.
- Hang luminaire housing back on hinges.
- Connect supply wires to quick disconnect provided.
- Swing luminaire up and close up.
- Replace housing screws and power on.

For more detailed installation instructions, please visit www.xtralight.com and download the PDF from our VNTW product page.

VIENTO LED WALL PACK

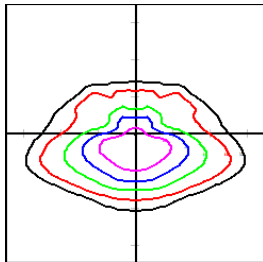
VNTW LED

IES DISTRIBUTION TYPES

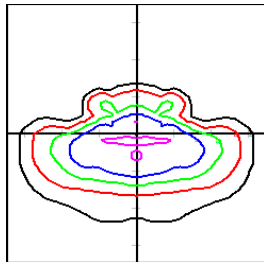
ISO Lines

Distance in Units of Mounting Height Values Based on 25 Foot Mounting Height.

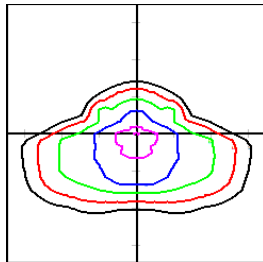
Type II Short



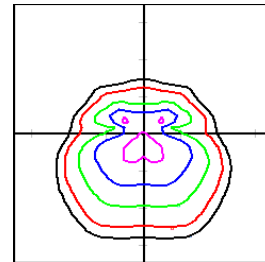
Type II Medium



Type III Medium



Type IV Short



PHOTOMETRIC DATA

4000K CCT

| Model | Type II Short | | | | |
|--------|---------------|--------|-------|-------|---------|
| | IES Report | Lumens | Watts | Lm/W | B U G |
| 3500L | SCALED | 3798 | 27.6 | 137.7 | 1--1--1 |
| 5500L | ATALO28652 | 6490 | 55.3 | 117.4 | 1--1--1 |
| 8000L | SCALED | 9166 | 79.0 | 116.1 | 2--1--2 |
| 11000L | ATALO28653 | 10071 | 92.7 | 108.6 | 2--1--2 |

| Model | Type III Medium | | | | |
|--------|-----------------|--------|-------|-------|---------|
| | IES Report | Lumens | Watts | Lm/W | B U G |
| 3500L | SCALED | 3741 | 27.6 | 135.6 | 1--1--1 |
| 5500L | SCALED | 6418 | 55.3 | 116.1 | 1--1--2 |
| 8000L | SCALED | 9018 | 79.0 | 114.2 | 2--1--2 |
| 11000L | SCALED | 9891 | 92.7 | 106.7 | 2--1--2 |

| Model | Type II Medium | | | | |
|--------|----------------|--------|-------|-------|---------|
| | IES Report | Lumens | Watts | Lm/W | B U G |
| 3500L | SCALED | 3744 | 27.6 | 135.8 | 1--1--1 |
| 5500L | SCALED | 6462 | 55.3 | 116.9 | 1--1--2 |
| 8000L | SCALED | 9109 | 79.0 | 115.4 | 2--1--2 |
| 11000L | SCALED | 9982 | 92.7 | 107.7 | 2--1--2 |

| Model | Type IV Short | | | | |
|--------|---------------|--------|-------|-------|---------|
| | IES Report | Lumens | Watts | Lm/W | B U G |
| 3500L | SCALED | 3774 | 27.6 | 136.8 | 1--1--1 |
| 5500L | SCALED | 6542 | 55.3 | 118.4 | 2--1--2 |
| 8000L | SCALED | 9242 | 79.0 | 117.0 | 2--1--2 |
| 11000L | SCALED | 10158 | 92.7 | 109.6 | 2--1--2 |

Additional CCT Information

Lumen Multiplier vs CCT

| CCT | Multiplier |
|-------|------------|
| 3000K | 0.83 |
| 4000K | 1.0 |
| 5000K | 0.98 |

VIENTO LED WALL PACK

VNTW LED
LIGHTING CONTROLS



LINE VOLTAGE HIGH/LOW/OFF PIR FIXTURE INTEGRATED OUT-DOOR PHOTO/MOTION SENSOR

| FSP-211

Fully adjustable high and low dimmed light levels; optional dusk to dawn control

Designed for LED fixtures; rated for extreme temperatures and up to 200,000 on/off cycles

Hold off setpoint with automatic calibration option for convenience and added energy savings



Adjustable via handheld wireless configuration tool

IP66 rated with choice of lenses for wet and outdoor locations, and mounting heights from 8' to 40'

Adjustable time delay and cut off delay



Description

The FSP-211 mounts in an outdoor lighting fixture and provides multi-level control based on motion and/or daylight contribution. It controls 0-10 VDC LED drivers or dimming ballasts, as well as non-dimming ballasts and, with an FSP-Lx Lens, is rated for wet and cold locations. All control parameters are adjustable via a wireless configuration tool capable of storing and transmitting sensor profiles.

Operation

Typically, the sensor ramps lighting On to the selected High mode level when motion is detected and the ambient light level is below the hold off setpoint. After the sensor stops detecting movement and the time delay elapses, lights fade to the Low mode level. If there is no motion during the subsequent cut off time delay, the lights will turn Off. For dusk to dawn control, the integral photocell can switch the lights On and Off based on the ambient light level so that lighting remains on overnight even without motion detection.

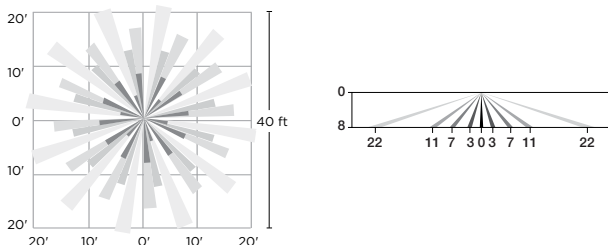
Wireless Handheld Configuration Tool

Initial setup and subsequent sensor adjustments are made using a handheld configuration tool (FSIR-100). This tool enables adjustment of parameters including high and low modes, sensitivity, time delay, cut off and more. The FSIR-100 is also used to initiate automatic calibration of the FSP-211 ambient light level setpoint. The setpoint is used to hold the controlled lighting off or at low level when there is sufficient daylight. The wireless tool stores up to six sensor parameter profiles to speed configuration of multiple sensors.

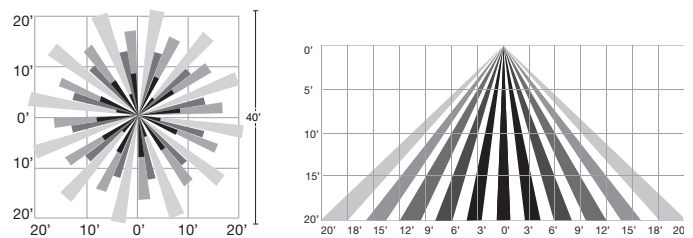
Applications

The slim, low-profile FSP-211 is designed for installation inside the bottom of a light fixture body. When fully assembled and installed in an IP66-rated fixture, the sensor and FSP-Lx lenses are IP66 outdoor rated. The sensor is ideal for areas such as parking facilities, gas stations, pedestrian pathways and warehouses. A choice of four lenses ensures complete coverage for mounting heights up to 40'.

OPTION FSP2 FSP-211 L2
8' Mounting Height
44' Diameter



OPTION FSP3 FSP-211 L3
20' Mounting Height
40' Diameter



VNTW LED
212004

www.XLM.com • (800) 678-6960 • customerservice@XLM.com

WORKING HARDER. LIGHTING SMARTER.®

All information is believed to be accurate at the time of publication. Please contact customer service or visit www.XLM.com for the most updated product specifications. XtraLight® reserves the right to change specifications without notice.

ODW LED

| | |
|---------------|--|
| Project Name: | |
| Type: | |



APPLICATION

This indoor & exterior decorative wall sconce is ideal for both commercial and residential application. Ideal for building entrances or walkways with wall mounting.

FEATURES:

- Solid metal accent bars.
- Sealed and gasketed construction.
- Oven cured no VOC acrylic powder coat.
- Fabricated 1/8" thick white acrylic diffuser, F1 rated, UV stable, UL-94 HB flame class rated.
- Easy relamping.

MOUNTING:

- Mounts to standard electrical junction box (by others) with provided hardware.

LED:

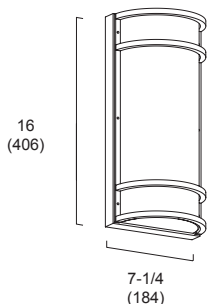
- Color Temperature: 2700/3000/3500/4000/5000 (K).
- LED Module: High efficiency up to 162 LPW.
- Service life: Greater than 60,000 hours(L₇₀) minimizing maintenance frequency.
- Poke in wire connectors.
- Color variation within 3-step MacAdam ellipse.
- Color Rendering Index: 80+

ELECTRICAL:

- High power factor electronic driver, operate from a 120~277 Vac input range, 50 / 60 Hz.
- Dimming Control: 10%~100% (std.), 1~100%, Bi-level step dim. ¹
- Power Factor: +0.9
- Efficiency: +85%
- Ambient Operating Temperature: -22°F (-30°C) ~ 122°F (50°C).
- Constant Current, Class 2

LISTING:

- 5 year product warranty.
- UL listed for wet location mounting 4' above grade.
- Listed to UL 1598 and UL 8750.
- ARRA compliant.



Specifications: ODW LED

Height: 16 (406)
Width: 7-1/4 (184)
Depth: 5-1/2 (140)

All dimensions are in inches (millimeters).

CONFIGURATIONS

| Series | LED | AC Input | Lumen Output | Lumen Efficiency |
|--------|-------|----------|--------------|------------------|
| ODW | 14LED | 16.4W | 1427 lm | 87 lm/W |
| | 20LED | 22.4W | 1946 lm | 86.8 lm/W |
| | 25LED | 27.4W | 2380 lm | 86.8 lm/W |

ORDERING INFORMATION

EXAMPLE: ODW-14LED-40K-UNV

| MODEL | LED | COLOR TEMP. | CRI | VOLTAGE | FINISH |
|---------|--|---|--|--|--|
| ODW LED | 14LED 14W LED 20LED 20W LED 25LED 25W LED | -27K 2700K -30K 3000K -35K 3500K -40K 4000K -50K 5000K | (Blank) 80+ CRI (Std.) C9 90+ CRI | UNV 120-277V (Std.) 120 120V 277 277V | NA Natural Aluminum (Std.) *GR Gray *BZ Bronze *WH White *BK Black <small>* Available custom color (RAL) Please provide us with the RAL number. * Non-standard finish with extra charge.</small> |

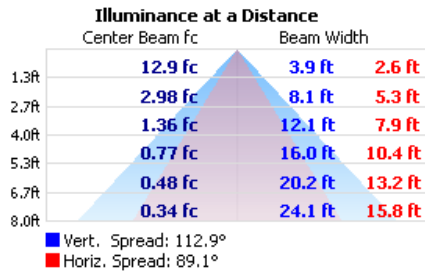
| DIMMING | | OPTIONS | |
|-------------|---|--------------|---|
| DM | 0-10V 10%~100% | REM | Remote EM (32°F ~ 122°F/ 0°C ~ 50°C) |
| DM1 | 0-10V 1~100% dim | REMCW | Remote EM for Cold Weather (-4°F ~ 122°F/ -20°C ~ 50°C) |
| SD50 | Bi-Level Step dim 50/100 ^{1,2} <small>* Contact factory for custom minimum dimming level set up. (Custom set up is not available with SD50)</small> | EMG8 | Integrated 8W EM Battery Backup ³ |
| | | BG | Bird Guard, Stainless Steel Spikes |

NOTES:

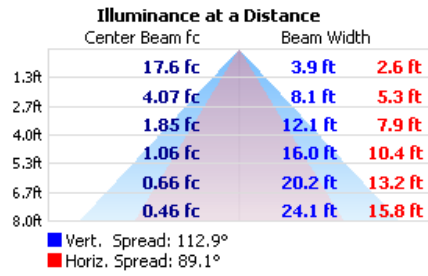
1. Contact factory for custom wattage or lumen requirement.
2. Lumens and watts per foot may differ for STEP drivers, consult factory.
3. Contact factory for other emergency ballast options.

ODW LED

ODW-14LED



ODW-20LED



ODW-25LED

